



# State of Arizona Budget Request

State Agency  
Prescott Historical Society of Arizona

A.R.S. Citation: 41-831

Governor DUCEY:

This and the accompanying budget schedules, statements and explanatory information constitute the operating budget request for this agency for Fiscal Year 2023.

To the best of my knowledge all statements and explanations contained in the estimates submitted are true and correct.

Agency Head: Lisa Hayes

Title: Executive Director

Lisa Hayes  
*(Signature)* 8/31/2021  
(signature)

Phone: (928) 277-2010

Prepared By: Teresa Coria

Email Address: tess.coria@sharlothallmuseum.org

Date Prepared: Tuesday, August 31, 2021

Appropriated Funds	FY 2022	FY 2023	FY 2023
	Approp	Fund. Issue	Total Budget
General Fund	900.6	122.8	1,023.4
Total Amount Requested:	900.6	122.8	1,023.4

Non-Appropriated Funds	FY 2022	FY 2023	FY 2023
	Expd. Plan	Fund. Issue	Total Budget
Sharlot Hall Historical Society 501 (c)3 Fund	628.9	0.0	628.9
Total Amount Planned:	628.9	0.0	628.9

Total:	1,529.5	122.8	1,652.3
--------	---------	-------	---------

# Revenue Schedule

Agency: Prescott Historical Society of Arizona

Fund: PH9505 Sharlot Hall Historical Society 501 (c)3 Fund

AFIS Code	Category of Receipt and Description	FY 2021	FY 2022	FY 2023
4236	STATE AND LOCAL GOVERNMENT - OTHER	67.0	67.0	67.0
4320	ADMISSION AND ENTRY FEES	119.6	140.0	140.0
4339	OTHER FEES AND CHARGES FOR SERVICES	176.4	104.0	104.0
4372	PUBLICATIONS AND REPRODUCTIONS	10.5	16.0	16.0
4379	OTHER CHARGES FOR GOODS	51.4	40.0	40.0
4449	OTHER FEES	74.3	80.0	80.0
4611	UNRESTRICTED DONATIONS	149.5	20.9	20.9
4612	RESTRICTED DONATIONS	27.5	25.0	25.0
4632	RENTAL INCOME	109.6	120.0	120.0
4634	OTHER INVESTMENT INCOME	70.1	12.0	12.0
Fund Total:		855.9	624.9	624.9

## Sources and Uses of Funds

Agency: Prescott Historical Society of Arizona

Fund: PH9505 Sharlot Hall Historical Society 501 (c)3 Fund

Cash Flow Summary	Actual FY 2021	Estimate FY 2022	Estimate FY 2023
Balance Forward from Prior Year	908.3	1,162.3	1,158.3
Revenue (From Revenue Schedule)	855.9	624.9	624.9
Total Available	1,764.2	1,787.2	1,783.2
Total Appropriated Disbursements	0.0	0.0	0.0
Total Non-Appropriated Disbursements	601.9	628.9	628.9
Balance Forward to Next Year	1,162.3	1,158.3	1,154.3

Non-Appropriated Expenditure	Actual FY 2021	Estimate FY 2022	Estimate FY 2023
<b>Expenditure Categories</b>			
Personal Services	0.0	0.0	0.0
Employee Related Expenses	0.0	0.0	0.0
Prof. And Outside Services	282.9	322.5	322.5
Travel - In State	2.1	0.5	0.5
Travel - Out of State	0.0	0.0	0.0
Food	0.0	0.0	0.0
Aid to Organizations and Individuals	0.0	0.0	0.0
Other Operating Expenses	316.9	305.9	305.9
Equipment	0.0	0.0	0.0
Capital Outlay	0.0	0.0	0.0
Debt Service	0.0	0.0	0.0
Cost Allocation	0.0	0.0	0.0
Transfers	0.0	0.0	0.0
<b>Expenditure Categories Total:</b>	<b>601.9</b>	<b>628.9</b>	<b>628.9</b>
Cap Transfer due to Fund Balance	0.0	0.0	0.0
Residual Equity Transfer	0.0	0.0	0.0
Prior Commitments or Obligated Expenditures	0.0	0.0	0.0
Non Appropriated 27th Pay Roll	0.0	0.0	0.0
<b>Non-Appropriated Expenditure Total:</b>	<b>601.9</b>	<b>628.9</b>	<b>628.9</b>
<b>Non-Appropriated FTE:</b>	<b>0.0</b>	<b>0.0</b>	<b>0.0</b>

### Fund Description

OSPB: Revenue received from donations, memberships, interest, gift shop sales and rent held in trust outside of the State Treasurer's control are used for publication and journal printing, educational programming, archival and curatorial supplies, and graphics.

# Funding Issues List

Agency: Prescott Historical Society of Arizona

FY 2023

Priority	Funding Issue Title	FY 2023				
		Total FTE	Total Amount	General Fund	Other Approp. Funds	Non-App Funds
1	Development Manager	1.0	72.8	72.8	0.0	0.0
2	Employee Compensation	0.0	50.0	50.0	0.0	0.0
Total:		1.0	122.8	122.8	0.0	0.0
Decision Package Total:		1.0	122.8	122.8	0.0	0.0

# Funding Issue Detail

Agency: Prescott Historical Society of Arizona

Issue: 1 Development Manager

Program: Sharlot Hall Museum  
 Fund: AA1000-A General Fund (Appropriated)

Calculated ERE: \$22.80  
 Uniform Allowance: \$0.00

Expenditure Categories	FY 2023
FTE	1.0
Personal Services	50.0
Employee Related Expenses	22.8
<b>Subtotal Personal Services and ERE:</b>	<b>72.8</b>
Professional & Outside Services	0.0
Travel In-State	0.0
Travel Out-of-State	0.0
Food	0.0
Aid to Organizations & Individuals	0.0
Other Operating Expenditures	0.0
Equipment	0.0
Capital Outlay	0.0
Debt Services	0.0
Cost Allocation	0.0
Transfers	0.0
<b>Program / Fund Total:</b>	<b>72.8</b>

Issue: 2 Employee Compensation

Program: Sharlot Hall Museum  
 Fund: AA1000-A General Fund (Appropriated)

Calculated ERE: \$9.90  
 Uniform Allowance: \$0.00

Expenditure Categories	FY 2023
FTE	0.0
Personal Services	40.1
Employee Related Expenses	9.9
<b>Subtotal Personal Services and ERE:</b>	<b>50.0</b>
Professional & Outside Services	0.0
Travel In-State	0.0
Travel Out-of-State	0.0
Food	0.0
Aid to Organizations & Individuals	0.0
Other Operating Expenditures	0.0
Equipment	0.0
Capital Outlay	0.0
Debt Services	0.0
Cost Allocation	0.0
Transfers	0.0
<b>Program / Fund Total:</b>	<b>50.0</b>

# Summary of Expenditure and Budget Request for All Funds

Agency: Prescott Historical Society of Arizona

Appropriated: \_\_\_\_\_

Cost Center/Program: \_\_\_\_\_

	FY 2021 Actual	FY 2022 Expd. Plan	FY 2023 Fund. Issue	FY 2023 Total Request
1 Sharlot Hall Museum	863.2	900.6	122.8	1,023.4
<b>Expenditure Categories</b>				
FTE	11.0	11.0	1.0	12.0
Personal Services	580.1	580.1	90.1	670.2
Employee Related Expenses	233.3	233.0	32.7	265.7
Professional and Outside Services	0.0	0.0	0.0	0.0
Travel In-State	0.0	0.0	0.0	0.0
Travel Out of State	0.0	0.0	0.0	0.0
Food	0.0	0.0	0.0	0.0
Aid to Organizations and Individuals	0.0	0.0	0.0	0.0
Other Operating Expenses	49.8	87.5	0.0	87.5
Equipment	0.0	0.0	0.0	0.0
Capital Outlay	0.0	0.0	0.0	0.0
Debt Service	0.0	0.0	0.0	0.0
Cost Allocation	0.0	0.0	0.0	0.0
Transfers	0.0	0.0	0.0	0.0
<b>Expenditure Categories Total:</b>	<b>863.2</b>	<b>900.6</b>	<b>122.8</b>	<b>1,023.4</b>

# Summary of Expenditure and Budget Request for All Funds

Agency: Prescott Historical Society of Arizona

Non-Appropriated

Cost Center/Program:

	FY 2021 Actual	FY 2022 Expd. Plan	FY 2023 Fund. Issue	FY 2023 Total Request
1    Sharlot Hall Museum	601.9	628.9	0.0	628.9
<b>Expenditure Categories</b>				
Personal Services	0.0	0.0	0.0	0.0
Employee Related Expenses	0.0	0.0	0.0	0.0
Professional and Outside Services	282.9	322.5	0.0	322.5
Travel In-State	2.1	0.5	0.0	0.5
Travel Out of State	0.0	0.0	0.0	0.0
Food	0.0	0.0	0.0	0.0
Aid to Organizations and Individuals	0.0	0.0	0.0	0.0
Other Operating Expenses	316.9	305.9	0.0	305.9
Equipment	0.0	0.0	0.0	0.0
Capital Outlay	0.0	0.0	0.0	0.0
Debt Service	0.0	0.0	0.0	0.0
Cost Allocation	0.0	0.0	0.0	0.0
Transfers	0.0	0.0	0.0	0.0
<b>Expenditure Categories Total:</b>	<b>601.9</b>	<b>628.9</b>	<b>0.0</b>	<b>628.9</b>

# Summary of Expenditure and Budget Request for All Funds

Agency: Prescott Historical Society of Arizona

Agency Total for All Funds:

1,465.1	1,529.5	122.8	1,652.3
---------	---------	-------	---------



# Summary of Expenditure and Budget Request for Selected Funds

Agency: Prescott Historical Society of Arizona  
Fund: AA1000 General Fund (Appropriated)

Cost Center/Program:	FY 2021	FY 2022	FY 2023	FY 2023
	Actual	Expd. Plan	Fund. Issue	Total Request
1    Sharlot Hall Museum	863.2	900.6	122.8	1,023.4
	863.2	900.6	122.8	1,023.4
<b>Expenditure Categories</b>				
FTE	11.0	11.0	1.0	12.0
Personal Services	580.1	580.1	90.1	670.2
Employee Related Expenses	233.3	233.0	32.7	265.7
Professional and Outside Services	0.0	0.0	0.0	0.0
Travel In-State	0.0	0.0	0.0	0.0
Travel Out of State	0.0	0.0	0.0	0.0
Food	0.0	0.0	0.0	0.0
Aid to Organizations and Individuals	0.0	0.0	0.0	0.0
Other Operating Expenses	49.8	87.5	0.0	87.5
Equipment	0.0	0.0	0.0	0.0
Capital Outlay	0.0	0.0	0.0	0.0
Debt Service	0.0	0.0	0.0	0.0
Cost Allocation	0.0	0.0	0.0	0.0
Transfers	0.0	0.0	0.0	0.0
<b>Expenditure Categories Total:</b>	<b>863.2</b>	<b>900.6</b>	<b>122.8</b>	<b>1,023.4</b>
<b>Fund Total:</b>	<b>863.2</b>	<b>900.6</b>	<b>122.8</b>	<b>1,023.4</b>

# Summary of Expenditure and Budget Request for Selected Funds

Agency: Prescott Historical Society of Arizona

Fund: PH9505 Sharlot Hall Historical Society 501 (c)3 Fund (Non-Appropriated)

Cost Center/Program:	FY 2021	FY 2022	FY 2023	FY 2023
	Actual	Expd. Plan	Fund. Issue	Total Request
1 Sharlot Hall Museum	601.9	628.9	0.0	628.9
	601.9	628.9	0.0	628.9
<b>Expenditure Categories</b>				
Personal Services	0.0	0.0	0.0	0.0
Employee Related Expenses	0.0	0.0	0.0	0.0
Professional and Outside Services	282.9	322.5	0.0	322.5
Travel In-State	2.1	0.5	0.0	0.5
Travel Out of State	0.0	0.0	0.0	0.0
Food	0.0	0.0	0.0	0.0
Aid to Organizations and Individuals	0.0	0.0	0.0	0.0
Other Operating Expenses	316.9	305.9	0.0	305.9
Equipment	0.0	0.0	0.0	0.0
Capital Outlay	0.0	0.0	0.0	0.0
Debt Service	0.0	0.0	0.0	0.0
Cost Allocation	0.0	0.0	0.0	0.0
Transfers	0.0	0.0	0.0	0.0
<b>Expenditure Categories Total:</b>	<b>601.9</b>	<b>628.9</b>	<b>0.0</b>	<b>628.9</b>
<b>Fund Total:</b>	<b>601.9</b>	<b>628.9</b>	<b>0.0</b>	<b>628.9</b>

# Summary of Expenditure and Budget Request for Selected Funds

Agency: Prescott Historical Society of Arizona

Fund: PH9505 Sharlot Hall Historical Society 501 (c)3 Fund (Non-Appropriated)

	FY 2021 Actual	FY 2022 Expd. Plan	FY 2023 Fund. Issue	FY 2023 Total Request
Agency Total for Selected Funds	1,465.1	1,529.5	122.8	1,652.3

# Program Summary of Expenditures and Budget Request

Agency: Prescott Historical Society of Arizona  
 Program: Charlotte Hall Museum

	FY 2021	FY 2022	FY 2023	FY 2023
	Actual	Expd. Plan	Fund. Issue	Total Request

**Program Summary**

1-1	Charlotte Hall Museum	1,465.1	1,529.5	122.8	1,652.3
<b>Program Summary Total:</b>		<b>1,465.1</b>	<b>1,529.5</b>	<b>122.8</b>	<b>1,652.3</b>

**Expenditure Categories**

0000	FTE Positions	11.0	11.0	1.0	12.0
6000	Personal Services	580.1	580.1	90.1	670.2
6100	Employee Related Expenses	233.3	233.0	32.7	265.7
6200	Professional and Outside Services	282.9	322.5	0.0	322.5
6500	Travel In-State	2.1	0.5	0.0	0.5
6600	Travel Out of State	0.0	0.0	0.0	0.0
6700	Food	0.0	0.0	0.0	0.0
6800	Aid to Organizations and Individuals	0.0	0.0	0.0	0.0
7000	Other Operating Expenses	366.7	393.4	0.0	393.4
8000	Equipment	0.0	0.0	0.0	0.0
8100	Capital Outlay	0.0	0.0	0.0	0.0
8600	Debt Service	0.0	0.0	0.0	0.0
9000	Cost Allocation	0.0	0.0	0.0	0.0
9100	Transfers	0.0	0.0	0.0	0.0
<b>Expenditure Categories Total:</b>		<b>1,465.1</b>	<b>1,529.5</b>	<b>122.8</b>	<b>1,652.3</b>

**Fund Source**

<b>Appropriated Funds</b>					
<b>AA1000-A General Fund (Appropriated)</b>					
		863.2	900.6	122.8	1,023.4
		863.2	900.6	122.8	1,023.4

<b>Non-Appropriated Funds</b>					
<b>PH9505-N Charlotte Hall Historical Society 501 (C)3 Fund (Non</b>					
		601.9	628.9	0.0	628.9
		601.9	628.9	0.0	628.9
<b>Fund Source Total:</b>		<b>1,465.1</b>	<b>1,529.5</b>	<b>122.8</b>	<b>1,652.3</b>

# Program Group Summary of Expenditures and Budget Request for Selected Funds

Agency: Prescott Historical Society of Arizona  
 Program: Sharlot Hall Museum

FY 2021	FY 2022	FY 2023	FY 2023
Actual	Expd. Plan	Fund. Issue	Total Request

Fund: AA1000-A General Fund (Appropriated)

**Program Expenditures**

1-1	Sharlot Hall Museum	863.2	900.6	122.8	1,023.4
<b>Total</b>		<b>863.2</b>	<b>900.6</b>	<b>122.8</b>	<b>1,023.4</b>

**Appropriated Funding**

**Expenditure Categories**

FTE Positions	11.0	11.0	1.0	12.0
Personal Services	580.1	580.1	90.1	670.2
Employee Related Expenses	233.3	233.0	32.7	265.7
Professional and Outside Services	0.0	0.0	0.0	0.0
Travel In-State	0.0	0.0	0.0	0.0
Travel Out of State	0.0	0.0	0.0	0.0
Food	0.0	0.0	0.0	0.0
Aid to Organizations and Individuals	0.0	0.0	0.0	0.0
Other Operating Expenses	49.8	87.5	0.0	87.5
Equipment	0.0	0.0	0.0	0.0
Capital Outlay	0.0	0.0	0.0	0.0
Debt Service	0.0	0.0	0.0	0.0
Cost Allocation	0.0	0.0	0.0	0.0
Transfers	0.0	0.0	0.0	0.0

**Expenditure Categories Total:**

	863.2	900.6	122.8	1,023.4
--	-------	-------	-------	---------

**Fund AA1000-A Total:**

	863.2	900.6	122.8	1,023.4
--	-------	-------	-------	---------

**Program 1 Total:**

	863.2	900.6	122.8	1,023.4
--	-------	-------	-------	---------

# Program Group Summary of Expenditures and Budget Request for Selected Funds

Agency: Prescott Historical Society of Arizona  
 Program: Sharlot Hall Museum

	FY 2021	FY 2022	FY 2023	FY 2023
	Actual	Expd. Plan	Fund. Issue	Total Request

Fund: PH9505-N Sharlot Hall Historical Society 501 (c)3 Fund (Non-Appropriated)

**Program Expenditures**

**COST CENTER/PROGRAM BUDGET UNIT**

1-1	Sharlot Hall Museum	601.9	628.9	0.0	628.9
<b>Total</b>		<b>601.9</b>	<b>628.9</b>	<b>0.0</b>	<b>628.9</b>

**Non-Appropriated Funding**

**Expenditure Categories**

Personal Services	0.0	0.0	0.0	0.0	0.0
Employee Related Expenses	0.0	0.0	0.0	0.0	0.0
Professional and Outside Services	282.9	322.5	0.0	0.0	322.5
Travel In-State	2.1	0.5	0.0	0.0	0.5
Travel Out of State	0.0	0.0	0.0	0.0	0.0
Food	0.0	0.0	0.0	0.0	0.0
Aid to Organizations and Individuals	0.0	0.0	0.0	0.0	0.0
Other Operating Expenses	316.9	305.9	0.0	0.0	305.9
Equipment	0.0	0.0	0.0	0.0	0.0
Capital Outlay	0.0	0.0	0.0	0.0	0.0
Debt Service	0.0	0.0	0.0	0.0	0.0
Cost Allocation	0.0	0.0	0.0	0.0	0.0
Transfers	0.0	0.0	0.0	0.0	0.0

Expenditure Categories Total:

	601.9	628.9	0.0	0.0	628.9
--	-------	-------	-----	-----	-------

Fund PH9505-N Total:

	601.9	628.9	0.0	0.0	628.9
--	-------	-------	-----	-----	-------

Program 1 Total:

	601.9	628.9	0.0	0.0	628.9
--	-------	-------	-----	-----	-------

# Program Budget Unit Summary of Expenditures and Budget Request for All Funds

Agency: Prescott Historical Society of Arizona  
 Program: Sharlot Hall Museum

Expenditure Categories	FY 2021	FY 2022	FY 2023	FY 2023
	Actual	Expd. Plan	Fund. Issue	Total Request
0000 FTE	11.0	11.0	1.0	12.0
6000 Personal Services	580.1	580.1	90.1	670.2
6100 Employee Related Expenses	233.3	233.0	32.7	265.7
6200 Professional and Outside Services	282.9	322.5	0.0	322.5
6500 Travel In-State	2.1	0.5	0.0	0.5
6600 Travel Out of State	0.0	0.0	0.0	0.0
6700 Food	0.0	0.0	0.0	0.0
6800 Aid to Organizations and Individuals	0.0	0.0	0.0	0.0
7000 Other Operating Expenses	366.7	393.4	0.0	393.4
8000 Equipment	0.0	0.0	0.0	0.0
8100 Capital Outlay	0.0	0.0	0.0	0.0
8600 Debt Service	0.0	0.0	0.0	0.0
9000 Cost Allocation	0.0	0.0	0.0	0.0
9100 Transfers	0.0	0.0	0.0	0.0
<b>Expenditure Categories Total:</b>	<b>1,465.1</b>	<b>1,529.5</b>	<b>122.8</b>	<b>1,652.3</b>

**Fund Source**

Appropriated Funds	FY 2021	FY 2022	FY 2023	FY 2023
AA1000-A General Fund (Appropriated)	Actual	Expd. Plan	Fund. Issue	Total Request
863.2	863.2	900.6	122.8	1,023.4
863.2	863.2	900.6	122.8	1,023.4
<b>Non-Appropriated Funds</b>				
PH9505-N Sharlot Hall Historical Society 501 (C)3 Fund (Non	601.9	628.9	0.0	628.9
<b>Fund Source Total:</b>	<b>1,465.1</b>	<b>1,529.5</b>	<b>122.8</b>	<b>1,652.3</b>

# Program Budget Unit Summary of Expenditures and Budget Request for Selected Funds

Agency: Prescott Historical Society of Arizona

	FY 2021	FY 2022	FY 2023	FY 2023
	Actual	Expd. Plan	Fund. Issue	Total Request

Program: Charlotte Hall Museum

Fund: AA1000-A General Fund

<b>Appropriated</b>				
0000 FTE	11.0	11.0	1.0	12.0
6000 Personal Services	580.1	580.1	90.1	670.2
6100 Employee Related Expenses	233.3	233.0	32.7	265.7
6200 Professional and Outside Services	0.0	0.0	0.0	0.0
6500 Travel In-State	0.0	0.0	0.0	0.0
6600 Travel Out of State	0.0	0.0	0.0	0.0
6700 Food	0.0	0.0	0.0	0.0
6800 Aid to Organizations and Individuals	0.0	0.0	0.0	0.0
7000 Other Operating Expenses	49.8	87.5	0.0	87.5
8000 Equipment	0.0	0.0	0.0	0.0
8100 Capital Outlay	0.0	0.0	0.0	0.0
8600 Debt Service	0.0	0.0	0.0	0.0
9000 Cost Allocation	0.0	0.0	0.0	0.0
9100 Transfers	0.0	0.0	0.0	0.0
<b>Appropriated Total:</b>	<b>863.2</b>	<b>900.6</b>	<b>122.8</b>	<b>1,023.4</b>
<b>Fund Total:</b>	<b>863.2</b>	<b>900.6</b>	<b>122.8</b>	<b>1,023.4</b>
<b>Program Total For Selected Funds:</b>	<b>863.2</b>	<b>900.6</b>	<b>122.8</b>	<b>1,023.4</b>



# Program Budget Unit Summary of Expenditures and Budget Request for Selected Funds

Agency: Prescott Historical Society of Arizona

FY 2021	FY 2022	FY 2023	FY 2023
Actual	Expd. Plan	Fund. Issue	Total Request

Program: Sharlot Hall Museum

Fund: PH9505-N Sharlot Hall Historical Society 501 (c)3 Fund

Non-Appropriated

6000 Personal Services	0.0	0.0	0.0	0.0
6100 Employee Related Expenses	0.0	0.0	0.0	0.0
6200 Professional and Outside Services	282.9	322.5	0.0	322.5
6500 Travel In-State	2.1	0.5	0.0	0.5
6600 Travel Out of State	0.0	0.0	0.0	0.0
6700 Food	0.0	0.0	0.0	0.0
6800 Aid to Organizations and Individuals	0.0	0.0	0.0	0.0
7000 Other Operating Expenses	316.9	305.9	0.0	305.9
8000 Equipment	0.0	0.0	0.0	0.0
8100 Capital Outlay	0.0	0.0	0.0	0.0
8600 Debt Service	0.0	0.0	0.0	0.0
9000 Cost Allocation	0.0	0.0	0.0	0.0
9100 Transfers	0.0	0.0	0.0	0.0
<b>Non-Appropriated Total:</b>	<b>601.9</b>	<b>628.9</b>	<b>0.0</b>	<b>628.9</b>
<b>Fund Total:</b>	<b>601.9</b>	<b>628.9</b>	<b>0.0</b>	<b>628.9</b>
<b>Program Total For Selected Funds:</b>	<b>601.9</b>	<b>628.9</b>	<b>0.0</b>	<b>628.9</b>

## Program Expenditure Schedule

Agency:	Prescott Historical Society of Arizona
Program:	Sharlot Hall Museum

	FY 2021 Actual	FY 2022 Expd. Plan
FTE	11.0	11.0
Expenditure Category Total	11.0	11.0
<b>Appropriated</b>		
AA1000-A General Fund (Appropriated)	11.0	11.0
Fund Source Total	11.0	11.0
<hr/>		
Personal Services	580.1	580.1
Boards and Commissions	0.0	0.0
Expenditure Category Total	580.1	580.1
<b>Appropriated</b>		
AA1000-A General Fund (Appropriated)	580.1	580.1
Fund Source Total	580.1	580.1
<hr/>		
Employee Related Expenses	233.3	233.0
Expenditure Category Total	233.3	233.0
<b>Appropriated</b>		
AA1000-A General Fund (Appropriated)	233.3	233.0
Fund Source Total	233.3	233.0
<hr/>		
Professional and Outside Services		322.5
External Prof/Outside Serv Budg And Appn	0.0	
External Investment Services	4.4	
Other External Financial Services	7.2	
Attorney General Legal Services	0.0	
External Legal Services	0.0	
External Engineer/Architect Cost - Exp	0.0	
External Engineer/Architect Cost- Cap	0.0	
Other Design	0.0	
Temporary Agency Services	0.0	
Hospital Services	0.0	
Other Medical Services	0.0	
Institutional Care	0.0	
Education And Training	7.8	
Vendor Travel	0.0	
Professional & Outside Services Excluded from Cost Alloca	0.0	
Vendor Travel - Non Reportable	0.0	
External Telecom Consulting Services	0.0	
Costs related to those in custody of the State	0.0	
Non - Confidential Specialist Fees	0.0	
Confidential Specialist Fees	0.0	
Outside Actuarial Costs	0.0	
Other Professional And Outside Services	263.5	

## Program Expenditure Schedule

Agency:	Prescott Historical Society of Arizona
Program:	Sharlot Hall Museum

	FY 2021 Actual	FY 2022 Expd. Plan
Expenditure Category Total	282.9	322.5
<b>Non-Appropriated</b>		
PH9505-N Sharlot Hall Historical Society 501 (c)3 Fund (Non-Approp	282.9	322.5
Fund Source Total	282.9	322.5
<hr/>		
Travel In-State	2.1	0.5
Expenditure Category Total	2.1	0.5
<b>Non-Appropriated</b>		
PH9505-N Sharlot Hall Historical Society 501 (c)3 Fund (Non-Approp	2.1	0.5
Fund Source Total	2.1	0.5
<hr/>		
Travel Out of State	0.0	0.0
Expenditure Category Total	0.0	0.0
<b>Non-Appropriated</b>		
PH9505-N Sharlot Hall Historical Society 501 (c)3 Fund (Non-Approp	0.0	0.0
Fund Source Total	0.0	0.0
<hr/>		
Food	0.0	0.0
Expenditure Category Total	0.0	0.0
<hr/>		
Aid to Organizations and Individuals	0.0	0.0
Expenditure Category Total	0.0	0.0
<hr/>		
Other Operating Expenses		393.4
Other Operating Expenditures Budg Approp	0.0	
Other Operating Expenditures Excluded from Cost Allocati	0.0	
Risk Management Charges To State Agency	16.9	
Risk Management Deductible - Indemnity	0.0	
Risk Management Deductible - Legal	0.0	
Risk Management Deductible - Medical	0.0	
Risk Management Deductible - Other	0.0	
Gen Liab- Non Physical-Taxable- Self Ins	0.0	
Gross Proceeds Payments To Attorneys	0.0	
General Liability- Non-Taxable- Self Ins	0.0	
Medical Malpractice - Self-Insured	0.0	
Automobile Liability - Self Insured	0.0	
General Property Damage - Self- Insured	0.0	
Automobile Physical Damage-Self Insured	0.0	
Liability Insurance Premiums	10.7	
Property Insurance Premiums	0.0	
Workers Compensation Benefit Payments	3.0	
Self Insurance - Administrative Fees	0.0	
Self Insurance - Premiums	0.0	
Self Insurance - Claim Payments	0.0	
Self Insurance - Pharmacy Claims	0.0	
Premium Tax On Altcs	0.0	

# Program Expenditure Schedule

Agency: Prescott Historical Society of Arizona

Program: Sharlot Hall Museum

	FY 2021 Actual	FY 2022 Expd. Plan
Other Insurance-Related Charges	0.0	
Internal Service Data Processing	1.9	
Internal Service Data Proc- Pc/Lan	0.0	
External Programming-Mainframe/Legacy	0.0	
External Programming- Pc/Lan/Serv/Web	0.0	
External Data Entry	0.0	
Othr External Data Proc-Mainframe/Legacy	0.0	
Othr External Data Proc-Pc/Lan/Serv/Web	25.8	
Pmt for AFIS Development & Usage	0.2	
Internal Service Telecommunications	0.0	
External Telecom Long Distance-In-State	15.8	
External Telecom Long Distance-Out-State	0.0	
Other External Telecommunication Service	0.0	
Electricity	45.4	
Sanitation Waste Disposal	0.0	
Water	19.2	
Gas And Fuel Oil For Buildings	12.0	
Other Utilities	14.8	
Building Rent Charges To State Agencies	0.0	
Priv Lease To Own Bld Rent Chrgs To Agy	0.0	
Cert Of Part Bld Rent Chrgs To Agy	0.0	
Rental Of Land And Buildings	0.0	
Rental Of Computer Equipment	0.0	
Rental Of Other Machinery And Equipment	0.0	
Miscellaneous Rent	0.0	
Interest On Overdue Payments	0.0	
All Other Interest Payments	0.0	
Internal Acct/Budg/Financial Svcs	45.0	
Other Internal Services	31.0	
Repair And Maintenance - Buildings	46.9	
Repair And Maintenance - Vehicles	0.0	
Repair And Maint - Mainframe And Legacy	0.0	
Repair And Maint-Pc/Lan/Serv/Web	0.0	
Repair And Maintenance - Other Equipment	0.0	
Other Repair And Maintenance	0.0	
Software Support And Maintenance	8.5	
Uniforms	0.0	
Inmate Clothing	0.0	
Security Supplies	0.0	
Office Supplies	6.5	
Computer Supplies	0.0	
Housekeeping Supplies	0.0	
Bedding And Bath Supplies	0.0	
Drugs And Medicine Supplies	0.0	
Medical Supplies	0.0	
Dental Supplies	0.0	
Automotive And Transportation Fuels	0.0	
Automotive Lubricants And Supplies	0.0	
Rpr And Maint Supplies-Not Auto Or Build	0.0	
Repair And Maintenance Supplies-Building	0.0	
Other Operating Supplies	0.0	

## Program Expenditure Schedule

Agency: Prescott Historical Society of Arizona

Program: Sharlot Hall Museum

	FY 2021 Actual	FY 2022 Expd. Plan
Publications	0.0	
Aggregate Withheld Or Paid Commissions	0.0	
Lottery Prizes	0.0	
Lottery Distribution Costs	0.0	
Material for Further Processing	0.0	
Other Resale Supplies	23.3	
Loss On Sales Of Capital Assets	0.0	
Loss on Sales of Investments	0.0	
Employee Tuition Reimbursement-Graduate	0.0	
Employee Tuition Reimb Under-Grad/Other	0.0	
Conference Registration-Attendance Fees	0.0	
Other Education And Training Costs	0.0	
Advertising	20.0	
Sponsorships	0.0	
Internal Printing	7.9	
External Printing	2.6	
Photography	0.0	
Postage And Delivery	3.7	
Document shredding and Destruction Services	0.0	
Translation and Sign Language Services	0.0	
Distribution To State Universities	0.0	
Other Intrastate Distributions	0.0	
Awards	0.0	
Entertainment And Promotional Items	0.0	
Dues	3.8	
Books- Subscriptions And Publications	0.0	
Costs For Digital Image Or Microfilm	0.0	
Revolving Fund Advances	0.0	
Credit Card Fees Over Approved Limit	0.0	
Relief Bill Expenditures	0.0	
Surplus Property Distr To State Agencies	0.0	
Security Services	0.0	
Judgments - Damages	0.0	
ICA Payments to Claimants Confidential	0.0	
Jdgmnt-Confidential Restitution To Indiv	0.0	
Judgments - Non-Confidential Restitution	0.0	
Judgments - Punitive And Compensatory	0.0	
Pmts Made to Resolve/Disputes/Avoid Costs of Litigation	0.0	
Pmts For Contracted State Inmate Labor	0.0	
Payments To State Inmates	0.0	
Bad Debt Expense	0.0	
Interview Expense	0.0	
Employee Relocations-Nontaxable	0.0	
Employee Relocations-Taxable	0.0	
Non-Confidential Invest/Legal/Law Enf	0.0	
Conf/Sensitive Invest/Legal/Undercover	0.0	
Fingerprinting, Background Checks, Etc.	0.0	
Other Miscellaneous Operating	1.8	

# Program Expenditure Schedule

Agency: Prescott Historical Society of Arizona

Program: Sharlot Hall Museum

	FY 2021 Actual	FY 2022 Expd. Plan
<b>Expenditure Category Total</b>	<b>366.7</b>	<b>393.4</b>
<b>Appropriated</b>		
AA1000-A General Fund (Appropriated)	49.8	87.5
	<b>49.8</b>	<b>87.5</b>
<b>Non-Appropriated</b>		
PH9505-N Sharlot Hall Historical Society 501 (c)3 Fund (Non-Approp)	316.9	305.9
	<b>316.9</b>	<b>305.9</b>
<b>Fund Source Total</b>	<b>366.7</b>	<b>393.4</b>
Current Year Expenditures		0.0
Capital Equipment Budget And Approp	0.0	
Vehicles Capital Purchase	0.0	
Vehicles Capital Leases	0.0	
Furniture Capital Purchase	0.0	
Depreciable Works Of Art & Hist Treas/Coll Capital Purcha	0.0	
Non Depr Works Of Art & Hist Treas/Coll Cap Purchase	0.0	
Furniture Capital Leases	0.0	
Computer Equipment Capital Purchase	0.0	
Computer Equipment Capital Lease	0.0	
Telecommunication Equip-Capital Purchase	0.0	
Telecommunication Equip-Capital Lease	0.0	
Other Equipment Capital Purchase	0.0	
Other Equipment Capital Leases	0.0	
Purchased Or Licensed Software-Website	0.0	
Internally Generated Software-Website	0.0	
Development in Progress	0.0	
Right-Of-Way/Easement/Extraction Rights	0.0	
Oth Int Assets purchased, licensed or internally generate	0.0	
Other intangible assets acquired by capital lease	0.0	
Other Capital Asset Purchases	0.0	
Leasehold Improvement-Capital Purchase	0.0	
Other Capital Asset Leases	0.0	
Non-Capital Equip Budget And Approp	0.0	
Vehicles Non-Capital Purchase	0.0	
Vehicles Non-Capital Leases	0.0	
Furniture Non-Capital Purchase	0.0	
Works Of Art And Hist Treas-Non Capital	0.0	
Furniture Non-Capital Leases	0.0	
Computer Equipment Non-Capital Purchase	0.0	
Computer Equipment Non-Capital Lease	0.0	
Telecomm Equip Non-Capital Purchase	0.0	
Telecomm Equip Non-Capital Leases	0.0	
Other Equipment Non-Capital Purchase	0.0	
Weapons Non-Capital Purchase	0.0	
Other Equipment Non-Capital Lease	0.0	
Purchased Or Licensed Software/Website	0.0	
Internally Generated Software/Website	0.0	
LICENSES AND PERMITS	0.0	
Right-Of-Way/Easement/Extraction Exp	0.0	
Other Intangible Assets - Purchased, Licensed or Internall	0.0	
Noncapital Software/Web By Capital Lease	0.0	

# Program Expenditure Schedule

Agency: Prescott Historical Society of Arizona

Program: Sharlot Hall Museum

	FY 2021 Actual	FY 2022 Expd. Plan
Other Intangible Assets Acquired by Capital Lease	0.0	
Other Long Lived Tangible Assets to be Expenses	0.0	
Non-Capital Equipment Excluded from Cost Allocation	0.0	
Expenditure Category Total	0.0	0.0
Capital Outlay	0.0	0.0
Expenditure Category Total	0.0	0.0
Debt Service	0.0	0.0
Expenditure Category Total	0.0	0.0
Cost Allocation	0.0	0.0
Expenditure Category Total	0.0	0.0
Transfers	0.0	0.0
Expenditure Category Total	0.0	0.0

### Employee Retirement Coverage

Retirement System	FTE	Personal Services	Fund#
Arizona State Retirement System	11.0	580.1	AA1000-A

### Combined Regular & Elected Positions At/Above FICA Maximum of \$142,800

Total FTE	Personal Services	FTE's not eligible for Health, Dental & Life
0.0	0.0	0.0

# Administrative Costs

Agency: Prescott Historical Society of Arizona

## Administrative Costs Summary

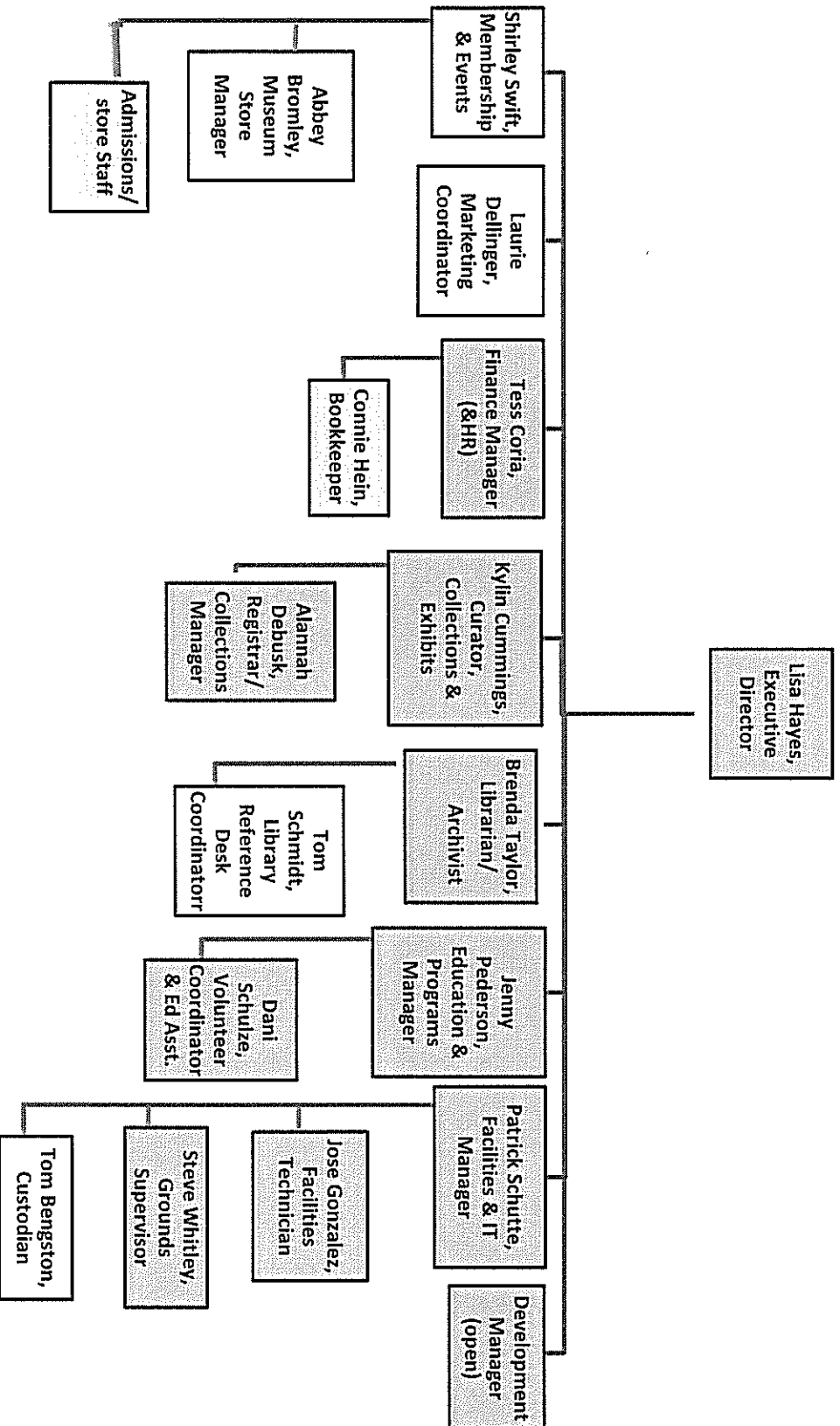
Common Administrative Area	FY 2022
Personal Services	20.0
ERE	10.0
All Other	20.0
Administrative Costs Total:	50.0

## Administrative Cost / Total Expenditure Ratio

	Request	Admin %
FY 2022	1,652.3	3.0%



PRESCOTT HISTORICAL SOCIETY/SHARLOT HALL MUSEUM  
 ORGANIZATION CHART JULY 2021



Blue – Full-time state (PHS)  
 Yellow – Full-time SHHS  
 Green-Part-time SHHS



Prescott Historical Society (PHS)  
Funding Issue #1

### Development Manager Position

Prescott Historical Society (PHS) would like to hire a Development Manager. This person would be responsible for implementing financial goals to support the fiscal year operating budget with a special emphasis on growing major donors and cultivating new support. The Development position will work closely with the Executive Director, to manage development operations and to drive and increase contributed revenue from all streams. Securing face to-face solicitation meetings, coordinating gatherings and events with major donors, and cultivating grant opportunities will be the primary responsibilities of this position. Hiring this position would be an exciting and beneficial opportunity to help grow this agency.

Additional funding to be brought in by this position is a minimum of \$250,000 per year. Failure to fund this position will detrimentally impact the ability to raise these funds. This will have an impact on operations and capital spending going forward.

Our current appropriation is comprised of 97.6% State mandated, non-discretionary spending, leaving only 2.4% for discretionary spending. PHS exercises fiscal responsibility and has needed to reserve this 2.4% for necessary, and at times, unanticipated spending that can occur during the year.

PHS is requesting \$75,000 in additional General Appropriation funding to allow for meeting its PS and ERE expenses.



Prescott Historical Society (PHS)  
Funding Issue #2

Employee Compensation

Prescott Historical Society's (PHS) General Appropriation is comprised of 97.6 % State mandated, non-discretionary spending leaving only 2.4% for discretionary spending. PHS exercises fiscal responsibility and has needed to reserve this 2.4% for necessary, and at times, unanticipated spending that can occur during the year. This lack of discretionary funds also severely limits the Agency in rewarding its highly rated employees with salary increases. This most likely will detrimentally impact PHS' ability to retain critical employees as they are not recognized for their work efforts.

Additional State overhead burdens assigned to PHS such as IT, financial and ERE allocations will reduce the 2.4% during the fiscal year. Depending on the amount of these increased allocations, at some point in the future PHS will not have enough General Appropriation funds to pay its employees.

PHS is requesting \$50,000 in additional General Appropriation funding to allow for meeting its payroll and ERE expenses.

## PHS Revenue Methodology

PHS uses historical data, economic forecasts, the City of Prescott Tourism office forecasts and other available information for revenue determination. Due to Covid19, all revenue streams are expected to be lower than historical numbers. Revenue forecasts have been lowered to reflect the uncertain effect of the ongoing Covid19 environment.